

NAUTILUS

BETTER CIRCULATION FOR EXCEPTIONAL DYEING:

The only dyeing machine with a **double belt** to reduce traction on the fabric preventing knots, folds and lengthening

Flexible load capacity with **constant liquor ratio** up to 40% of fabric load

Possibility to work with ropes of **different lengths**

TANDEM

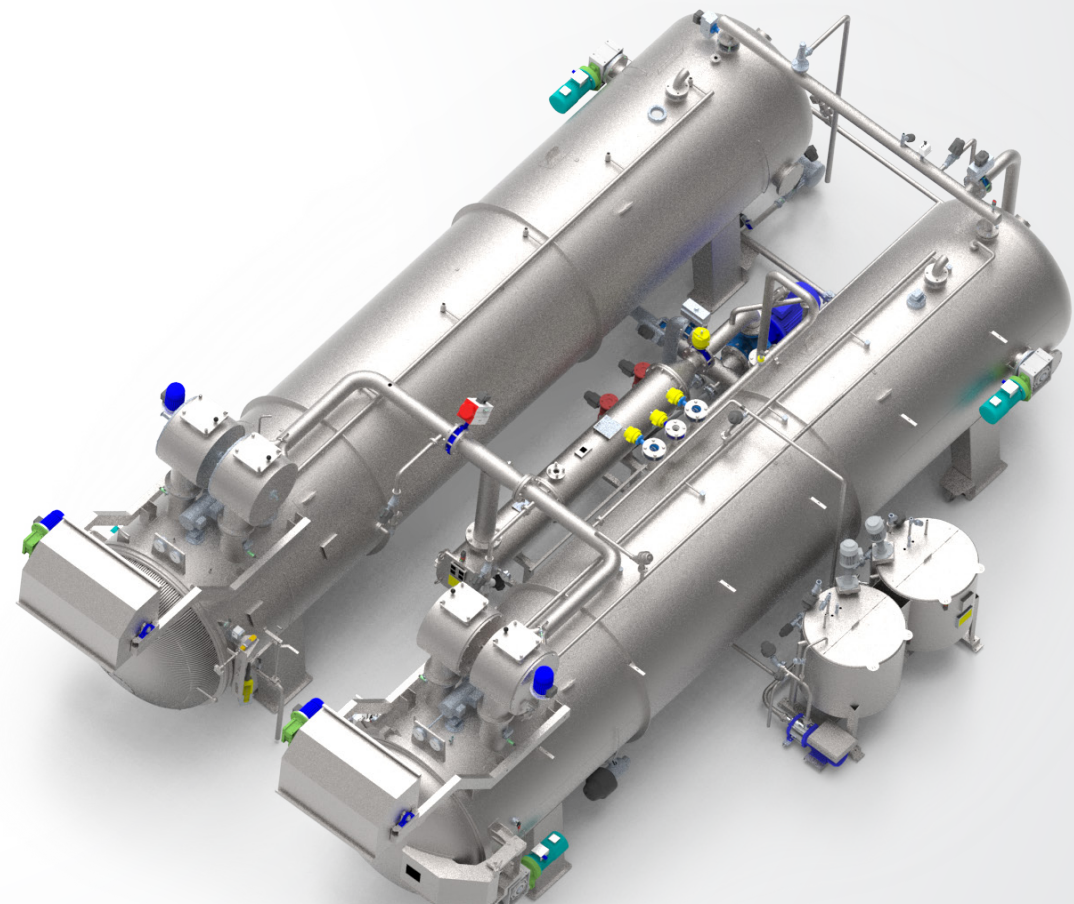
Possibility to combine two machines in tandem to increase the **load capacity**

INDUSTRY 4.0

Monitor consumption during the dyeing cycle, and **remote assistance** to meet the requirements of the industry 4.0

LESS ENVIRONMENTAL IMPACT:

- ✓ **WATER SAVING**
- ✓ **REDUCE STEAM CONSUMPTION**
- ✓ **UP TO -30% KW**



Natural and synthetic fiber knit
Tubular and warp knit for sportwear



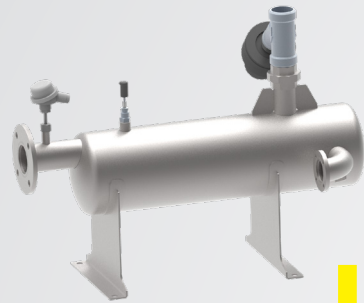
L.A.I.P. S.r.l.
Via San Paolo, 405 - 59100 Prato (PO) - Italy
PH: +39 0574 28218 - laip@laip.it - www.laip.it



ACIMIT
ITALIAN TEXTILE MACHINERY

LAIIP
Italian Dyeing Technology SINCE 1958

NAUTILUS

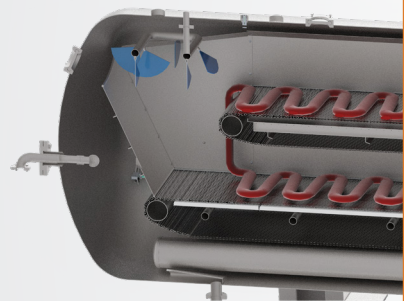


HT DRAIN WASHING

for the elimination of the oligomers

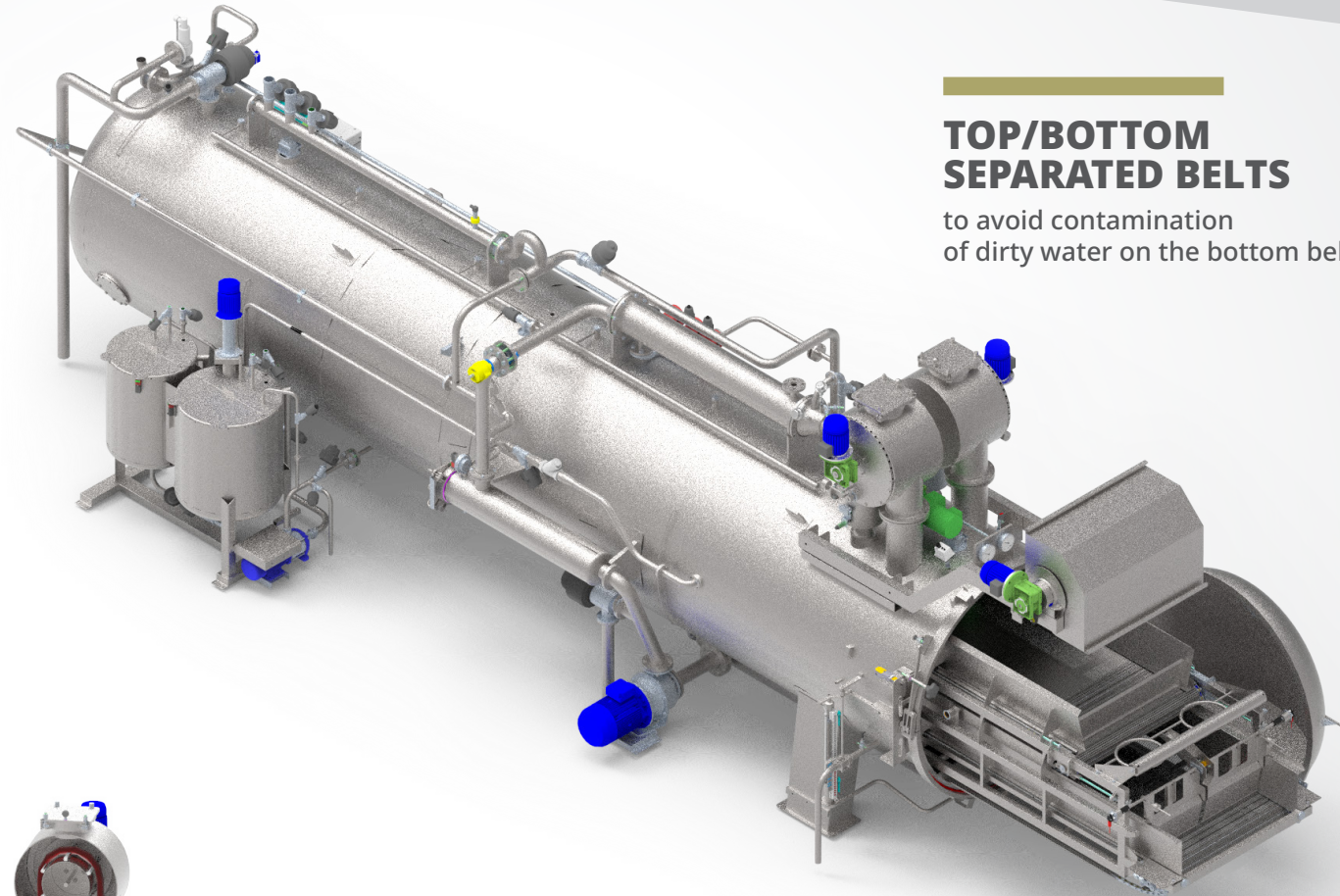
WASHING SPRAY DEVICE

for the whole length of the machine



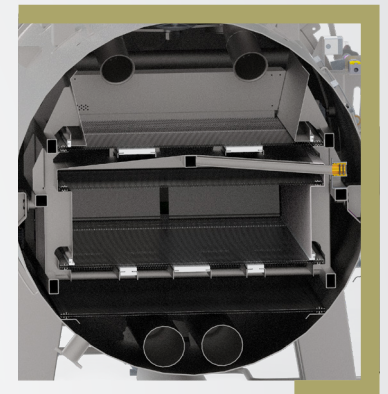
PH METER DEVICE

for control and auto adjustment



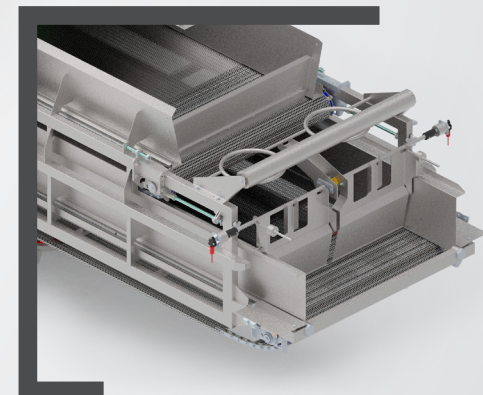
TOP/BOTTOM SEPARATED BELTS

to avoid contamination of dirty water on the bottom belt



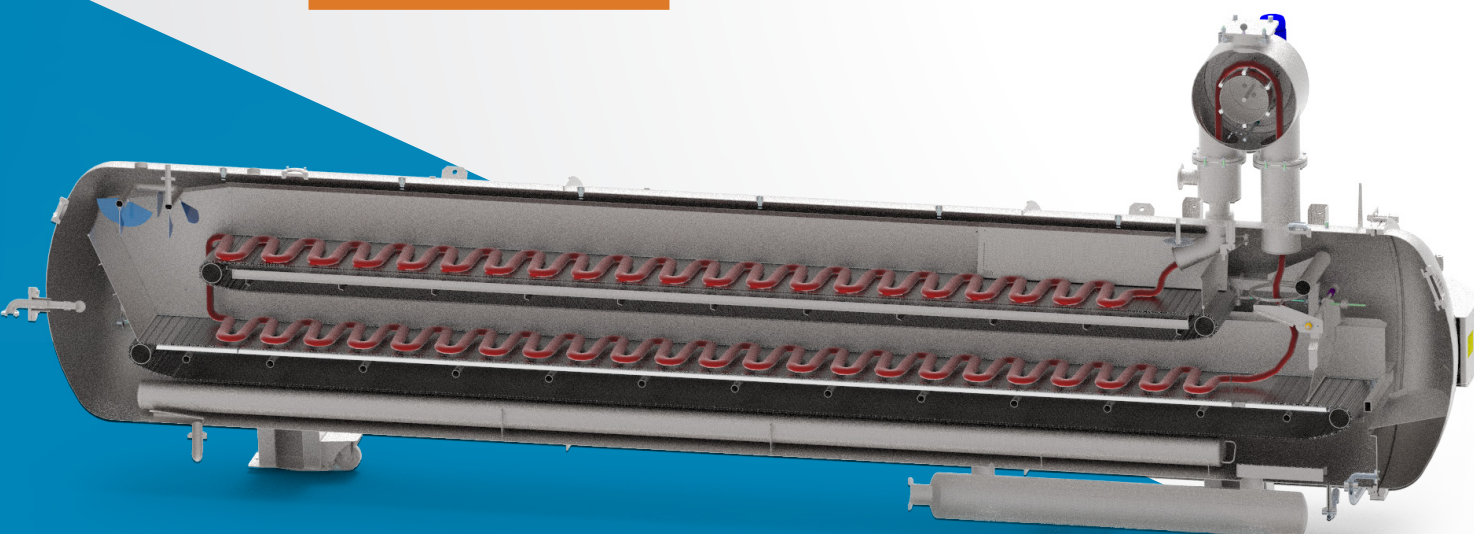
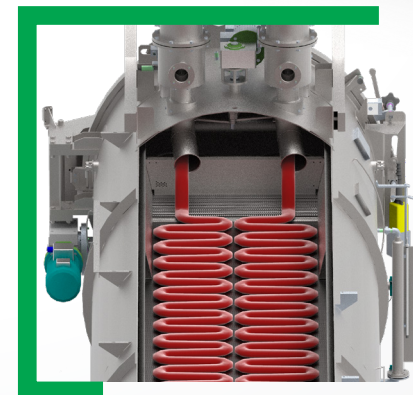
FABRIC PROGRESS DETECTION

to avoid knot formation



PLAITER SYSTEM

for a perfect folding of the fabric on the 2 belts



Section showing the two stainless steel belts to avoid fabric stress when dyeing

TECHNICAL DATA

Pressure 3,5 bar
Temperature 147 °C
Liquor ratio 1:3 - 1:4

Capacity 100 - 800 kg
Number of ropes 1 - 2 - 4 ropes
in 1 or 2 tubes

OPTIONAL

- Tubes sectioning for constant low ratio
- HT washing system
- ARC auto rinse control
- Fabric automatic speed control