

# BEAM DYEING

## FULLY AUTOMATED MACHINE:

No need of any manual mechanical adjustment

Automatic pump speed for the correct bath circulation

### TANDEM

Possibility to combine two machines in tandem to increase the **load capacity**

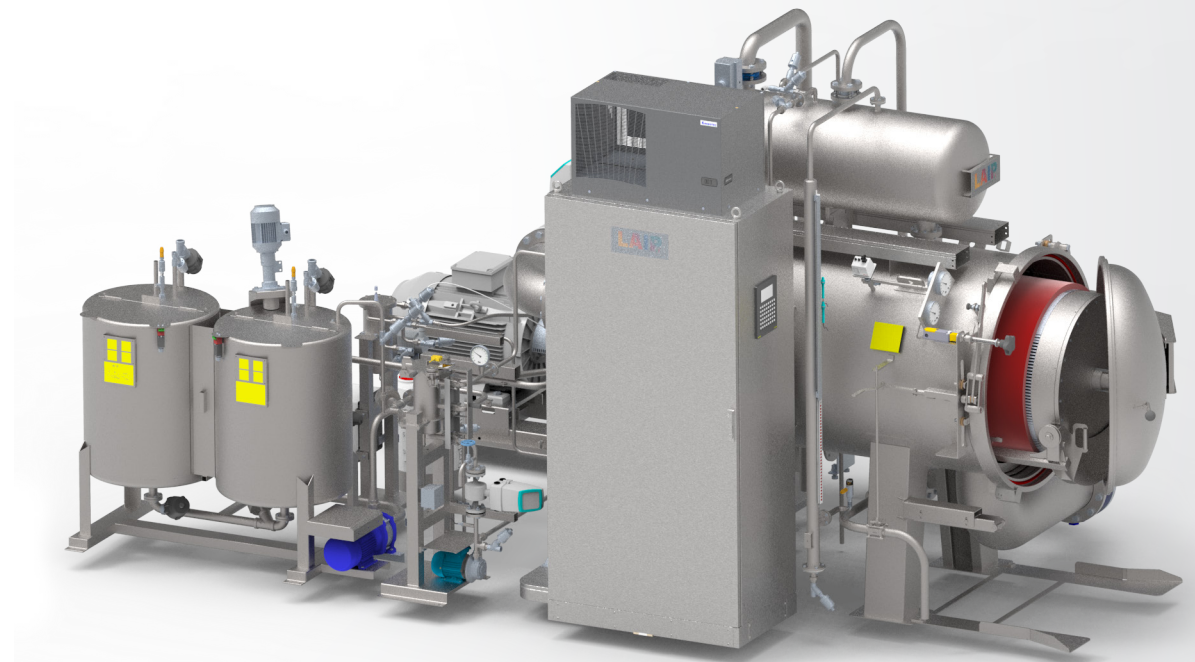
### INDUSTRY 4.0

Monitor consumption during the dyeing cycle, and **remote assistance** to meet the requirements of the industry 4.0

## MACHINE FOR OPEN WIDTH DYEING

## IDEAL TO DYE:

- ✓ **SYNTHETIC, NATURAL** and **TECHNICAL FABRICS**
- ✓ **WOVEN, KNITTED** and **WARP KNITTED FABRICS**
- ✓ **SPORTWEAR** and **WORKWEAR**



**Delicate** knitted or woven fabrics  
**High end** silk and technical  
Tubular and warp knit for **sportswear**  
Fine Wool



**L.A.I.P. S.r.l.**

Via San Paolo, 405 - 59100 Prato (PO) - Italy

PH: +39 0574 28218 - laip@laip.it - [www.laip.it](http://www.laip.it)



**ACIMIT**  
ITALIAN TEXTILE MACHINERY

**L A I P**  
Italian Dyeing Technology SINCE 1958



# BEAM DYEING

## INTERNAL DEVICE

for adjusting the width  
of the dyeing beam according  
to fabric shrinking

## DELTA P

device for water pressure  
control and speed  
of circulation adjustments

## DUAL SYSTEM DYEING

Bath recirculation or air pad  
for a greater energy saving

## HT DRAIN

for the elimination  
of the oligomers

## CIRCULATION PUMP

centrifugal type with reversal bath  
or high efficiency unidirectional

## FLOW METER

for automatic adjustment  
of centrifugal pump  
in liter x minute

## PH METER DEVICE

for control  
and auto  
adjustment

## SAMPLING DEVICE

for perfect repeatability  
between sample  
and the fabric  
into the machine

## TECHNICAL DATA

**Pressure** 4,5 bar  
**Temperature** 156 °C  
**Winding Diameter** up to 1600 mm

**Working Width** up to 4500 mm  
**Load capacity** Depends on fabric thickness  
and characteristics

