

# 198 HT

## OPTIMAL DYEING:

Reliable and guaranteed thanks to the **homogeneous flow** distribution and optimisation of operating phases for **shorter process** times

Attention to consumption and respect for the environment with **low liquor ratio** and **low kw** consumption

Flexible load capacity with **constant liquor ratio**

### TANDEM

Possibility to combine two machines in tandem to increase the **load capacity**

### INDUSTRY 4.0

Monitor **consumption** during the dyeing cycle, and **remote assistance** to meet the requirements of the industry 4.0

- ✓ **HIGH DENSITY TOW/FIBER CAKES**
- ✓ **EASY MAINTENANCE**
- ✓ **COMPLETELY AUTOMATED FULL LINE PLANTS**



## YARN-TOW-FIBER DYEING MACHINE



**L.A.I.P. S.r.l.**  
Via San Paolo, 405 - 59100 Prato (PO) - Italy  
PH: +39 0574 28218 - laip@laip.it - [www.laip.it](http://www.laip.it)

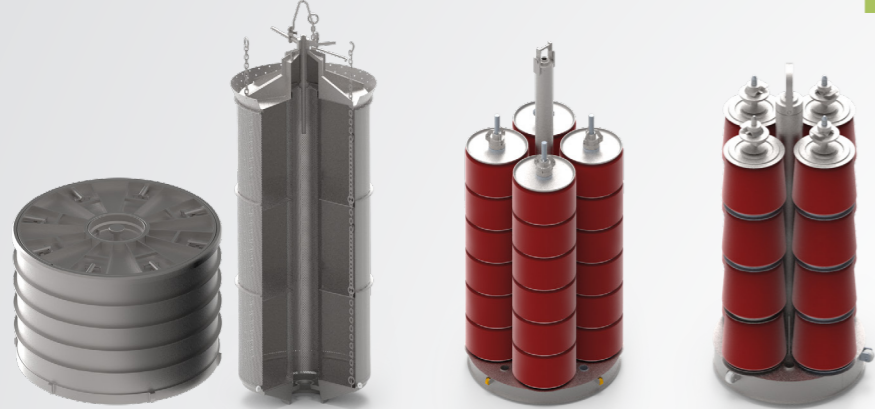


**ACIMIT**  
ITALIAN TEXTILE MACHINERY

**LAIP**  
SINCE 1958  
Italian Dyeing Technology

# 198 HT

## MATERIAL CARRIERS



### TOW/FIBER

Centrifugal basket version

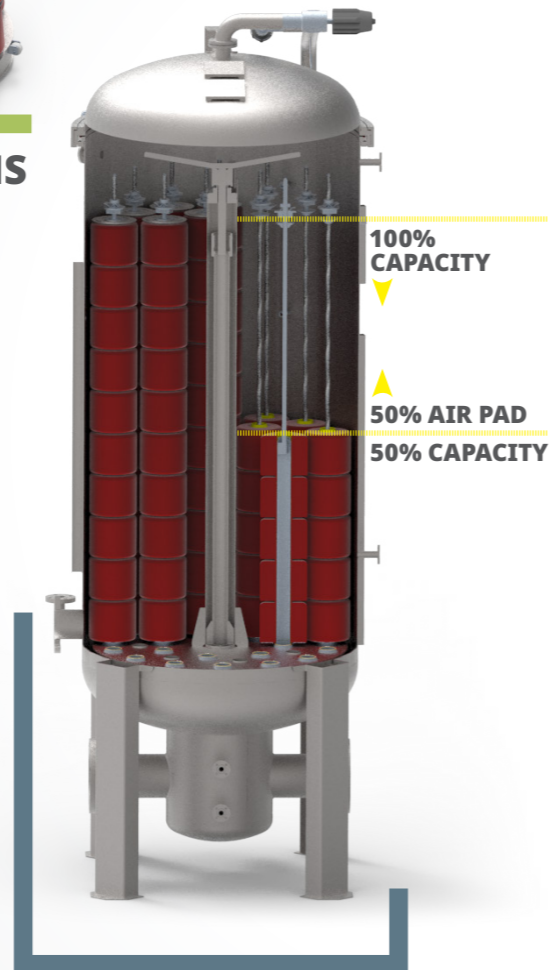
### TOPS

### BOBBINS

## FLOW METER

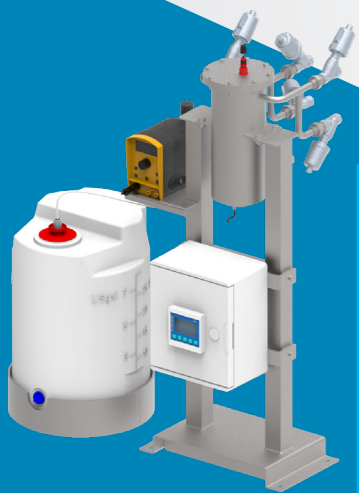
for automatic adjustment of centrifugal pump in liter x minute

## AIR PAD



## SAMPLING DEVICE

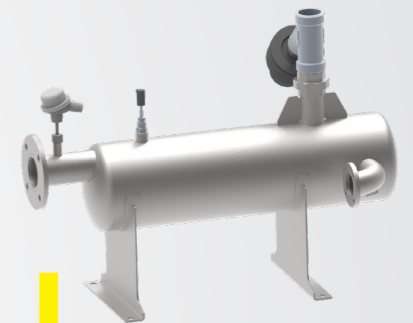
for perfect repeatability between sample and yarn into the machine



## PH METER DEVICE

for control and auto adjustment

## AUTOMATIC LOCKING SYSTEM



## HT DRAIN

for the elimination of the oligomers

## DELTA P

device for water pressure control and speed of circulation adjustments

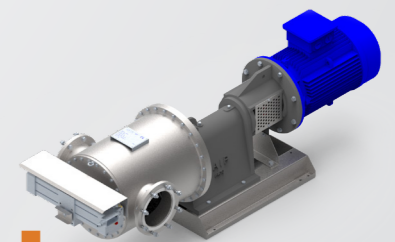
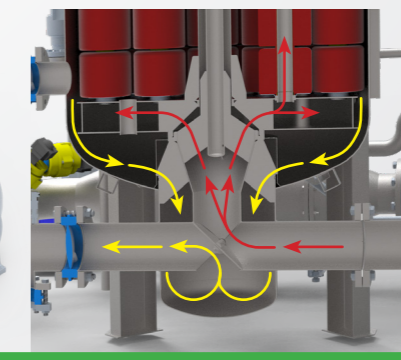
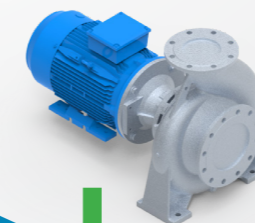
## PUMP DEPENDING ON APPLICATION

## TWO WAY CENTRIFUGAL PUMP

with internal inversion in-to-out and out-to-in

## ONE WAY CENTRIFUGAL PUMP

in-to-out and out-to-in



## TECHNICAL DATA

Pressure 4,5 bar  
Temperature 156 °C

Liquor ratio 1:4 – 1:6  
Total capacity from 10 to 2500 Kg